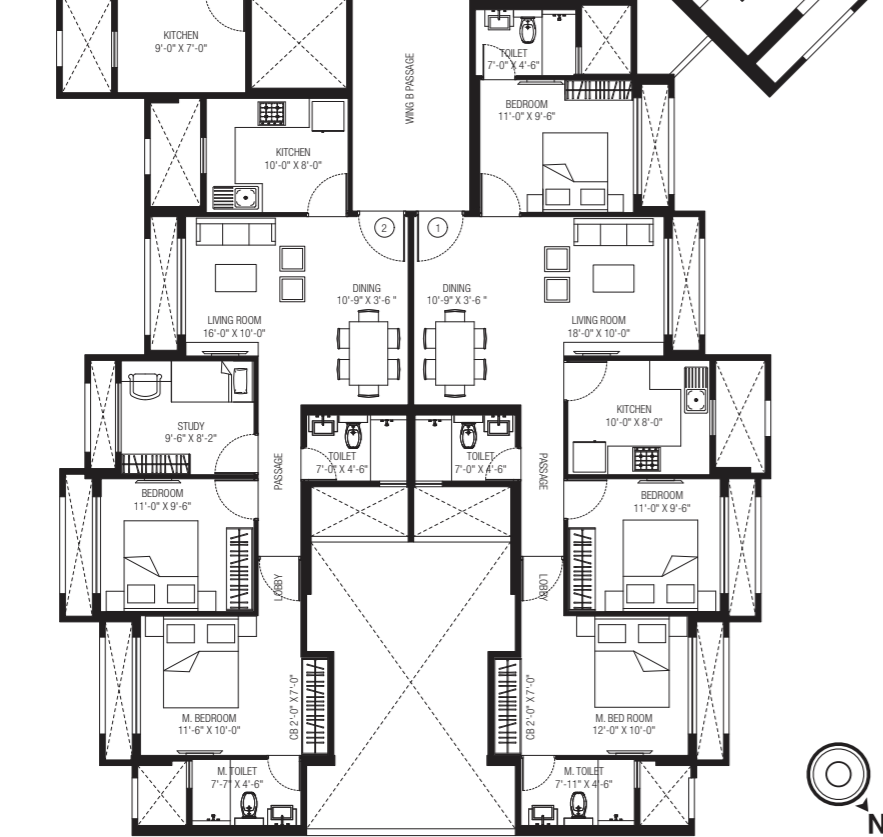
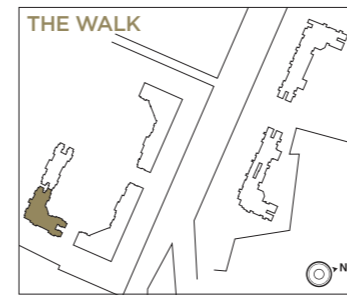


**OBELIA
WING - A**



**OBELIA
WING - B**



**OBELIA
WING - B**

Carpet Area Statement

FLAT Nos.	FLAT TYPE	As Per MOFA (with balcony, if any)		As Per RERA (A)		Total of Deck & Encl. Balcony (if any) (B)		Total (A+B)	
		(in Sq. Ft.)	(in Sq. Mtr.)	(in Sq. Ft.)	(in Sq. Mtr.)	(in Sq. Ft.)	(in Sq. Mtr.)	(in Sq. Ft.)	(in Sq. Mtr.)
1 (2 nd to 12 th Floor)	3 BHK	793	73.672	752	69.88	75	6.96	827	76.84
2 (2 nd to 12 th Floor)	2.5 BHK	708	65.775	672	62.46	65	6.04	737	68.5
3 (2 nd to 12 th Floor)	2 BHK	549	51.003	515	47.84	57	5.31	572	53.15
4 (1 st to 12 th Floor)	2 BHK	546	50.725	510	47.4	57	5.31	567	52.71
5 (1 st to 12 th Floor)	2 BHK	535	49.703	503	46.72	57	5.31	560	52.03
6 (2 nd to 12 th Floor)	2 BHK	552	51.282	523	48.54	55	5.06	578	53.6

Refuge Flat No. is 802

**OBELIA
WING - A**

Carpet Area Statement

FLAT Nos.	FLAT TYPE	As Per MOFA (with balcony, if any)		As Per RERA (A)		Total of Deck & Encl. Balcony (if any) (B)		Total (A+B)	
		(in Sq. Ft.)	(in Sq. Mtr.)	(in Sq. Ft.)	(in Sq. Mtr.)	(in Sq. Ft.)	(in Sq. Mtr.)	(in Sq. Ft.)	(in Sq. Mtr.)
1 (1 st to 12 th Floor)	2.5 BHK	707	65.682	676	62.77	68	6.34	744	69.11
2 (2 nd to 12 th Floor)	2.5 BHK	707	65.682	679	63.08	65	6.03	744	69.11
3 (2 nd to 12 th Floor)	2 BHK	554	51.468	522	48.51	57	5.31	579	53.82
4 (1 st to 12 th Floor)	2 BHK	535	49.703	503	46.77	57	5.31	560	52.08

Refuge Flat No. is 804

The project has been registered via MahaRERA registration number: Obelia - A wing - P51700000315, Obelia - B wing: P51700000304 and is available on the website <https://maharera.mahaonline.gov.in> under registered projects.

* All internal dimensions for carpet area are from unfinished wall surfaces * Minor variations up to (+/-) 3% in actual carpet areas may occur on account of site conditions/columns/finishes etc.
* In toilets, the carpet areas are inclusive of ledge walls (if any) * Conversion: 1 Sq. Mtr. = 10.764 Sq. Ft.